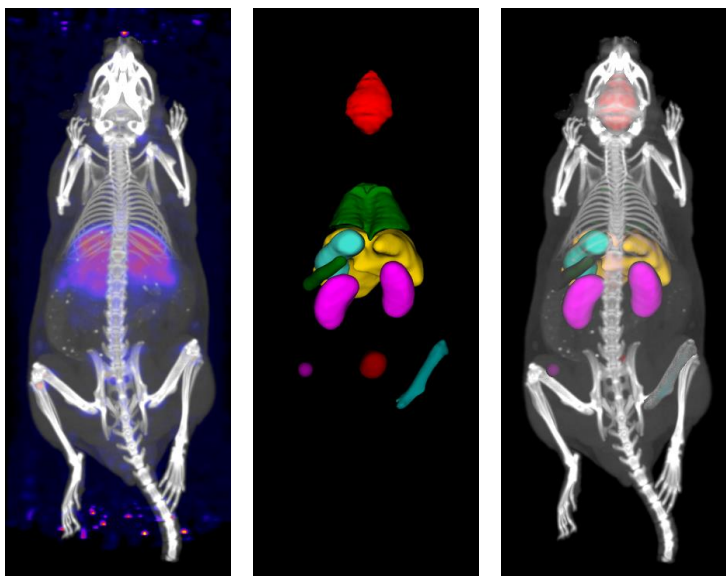


Analysis Example: Biodistribution

Phase	Species	Modality	Disease Area	Task(s)	Tools
Discovery, Translational	Rodent, NHP, Human	PET / SPECT	All	Quantification, Estimation	Modeling, Atlases

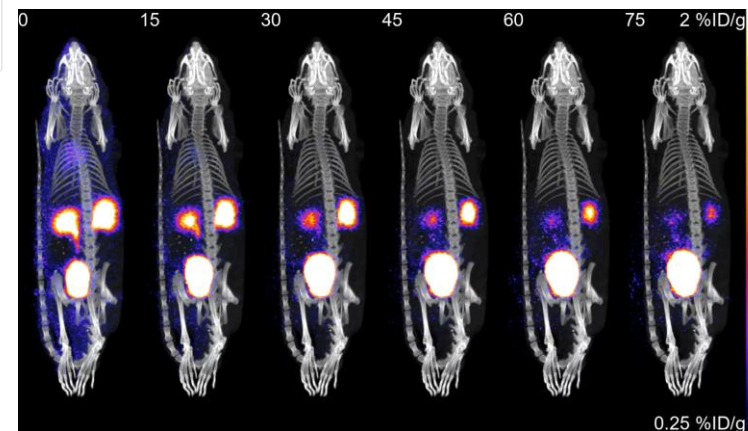
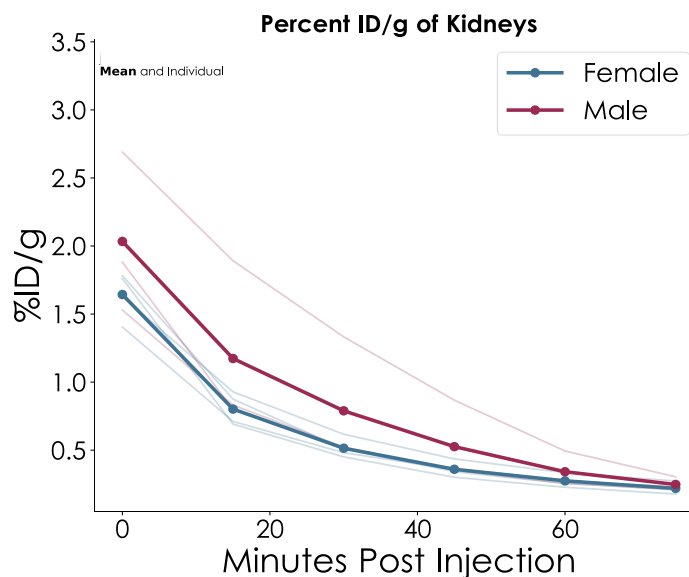
Analysis / Segmentation



Tissue uptake quantification.

Uptake, concentration (%ID, %ID/g, SUV) calculation.

Reporting



Biodistribution analysis incorporates multiple image processing methods and tools to generate estimates of tissue time-activity curves